

PLAT
NORTH
D.B. 187-325

DIANE B. HEALEY
D.B. 212-53
TAX # 46-10.2
PLAT IN M.B. 5-136



DIANE B. HEALEY
D.B. 212-53
D.B. 211-367
TAX # 41-5.4
PLAT IN M.B. 9-84

N 22°26'39" E
106.68'

IRON ROD ON
LINE 11.73'
FROM CORNER

IRON ROD 1.5' N.W. OF
A GUY WIRE ANCHOR

PART OF FORMER
27.47 AC. - SEE
PLAT IN M.B. 4-223

D.B. 203-355
3.42± ACRES
TAX # 46-10

HAROLD JULIAN DUBOIS, JR.
D.B. 194-133
TAX # 46-10.5
PLAT IN M.B. 7-189

THE 3.42± ACRE PARCEL SHOWN
IS SUBJECT TO THE RIGHT OF WAY
OF COUNTY ROUTE 21.

THIS PLAT WAS COMPILED FROM
RECORDS AND DOES NOT REPRESENT
A CURRENT FIELD SURVEY.

N 58°11'48" W 20.00'
IRON ROD
PLAT IN D.B. 125-615
PATRICIA L. WALKER BLILEY
MICHAEL E. BLILEY
D.B. 125-611
TAX # 46-10.1

LINES FROM "A" TO
"B" TO "C":
N 57°34'51" W 64.11'
N 69°43'51" W 38.99'
N 77°20'51" W 46.92'
N 60°28'51" W 73.16'
N 44°55'51" W 37.21'
N 32°32'51" W 71.97'
N 19°12'51" W 44.30'
N 04°39'37" E 95.74'
N 00°47'40" E 243.36'
N 03°00'59" W 35.43'
N 12°39'37" W 33.47'
N 22°13'20" W 32.00'
N 29°27'41" W 33.41'
N 40°25'20" W 18.51'
N 58°55'15" W 121.22'
N 87°42'42" W 17.17'
S 80°32'02" W 37.01'

THIS PLAT DOES NOT
SHOW STRUCTURES,
UTILITIES, FENCES,
ALL ROADS, ALL RIGHT
OF WAYS AND ALL
EASEMENTS THAT MAY
EXIST AND AFFECT
THIS PROPERTY.

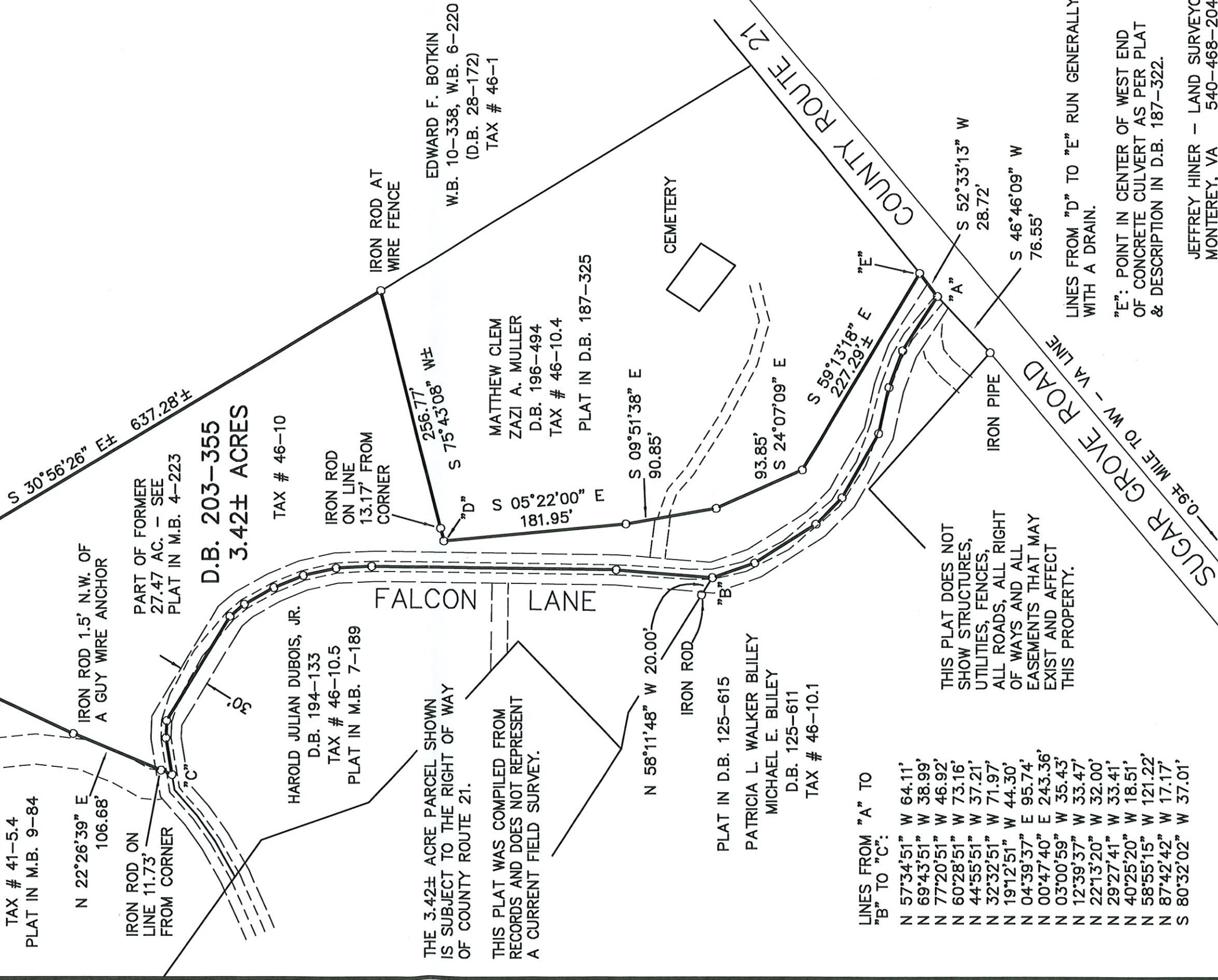
LINES FROM "D" TO "E" RUN GENERALLY
WITH A DRAIN.

"E": POINT IN CENTER OF WEST END
OF CONCRETE CULVERT AS PER PLAT
& DESCRIPTION IN D.B. 187-322.

JEFFREY HINER - LAND SURVEYOR
MONTEREY, VA 540-468-2040

COMPILED PLAT FOR SARAH GARRETTE KELLAM CATHERINE GARRETTE ATHAIDE JESSICA GARRETTE MADDEN

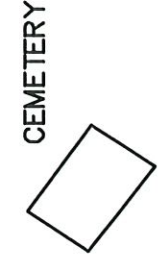
SUGAR GROVE DISTRICT
PENDLETON COUNTY, WV
MARCH 18, 2023 1" = 100'
P.N. 2303-02



IRON ROD
ON LINE
13.17' FROM
CORNER

MATTHEW CLEM
ZAZI A. MULLER
D.B. 196-494
TAX # 46-10.4
PLAT IN D.B. 187-325

EDWARD F. BOTKIN
W.B. 10-338, W.B. 6-220
(D.B. 28-172)
TAX # 46-1



COUNTY ROUTE 21

SUGAR GROVE ROAD
0.94 MILE TO W - VA LINE

S 52°33'13" W
28.72'

S 46°46'09" W
76.55'

S 09°51'38" E
90.85'

S 24°07'09" E
93.85'

S 59°13'18" E
227.29±'

S 30°56'26" E±
637.28±'

S 75°43'08" W±
256.77'

S 05°22'00" E
181.95±'