

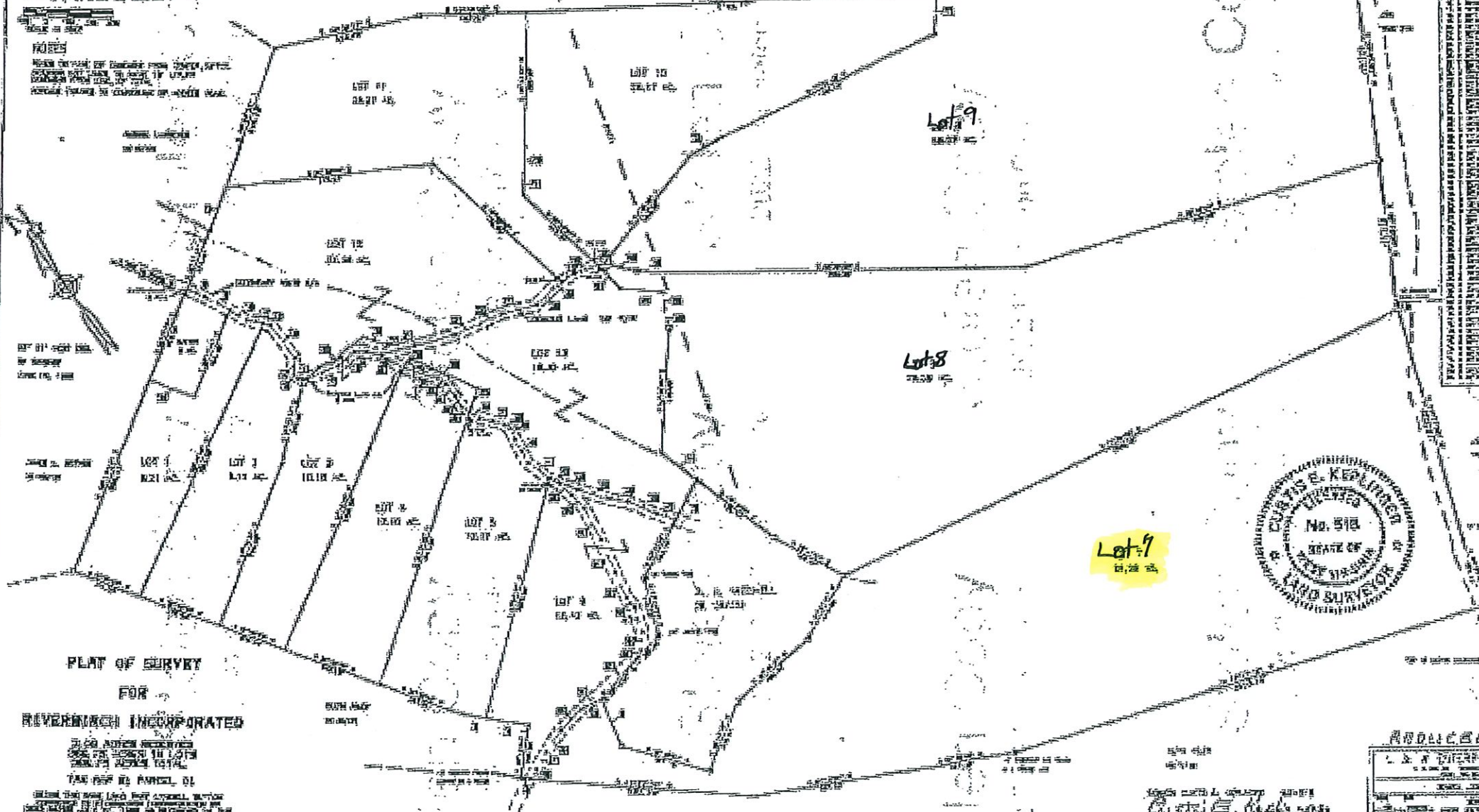
SENECA LOOKOUT

LEGEND

- 1. BOUNDARY LINE
- 2. EASEMENT
- 3. EASEMENT
- 4. EASEMENT
- 5. EASEMENT
- 6. EASEMENT
- 7. EASEMENT
- 8. EASEMENT
- 9. EASEMENT
- 10. EASEMENT
- 11. EASEMENT
- 12. EASEMENT
- 13. EASEMENT
- 14. EASEMENT
- 15. EASEMENT
- 16. EASEMENT
- 17. EASEMENT
- 18. EASEMENT
- 19. EASEMENT
- 20. EASEMENT
- 21. EASEMENT
- 22. EASEMENT
- 23. EASEMENT
- 24. EASEMENT
- 25. EASEMENT
- 26. EASEMENT
- 27. EASEMENT
- 28. EASEMENT
- 29. EASEMENT
- 30. EASEMENT
- 31. EASEMENT
- 32. EASEMENT
- 33. EASEMENT
- 34. EASEMENT
- 35. EASEMENT
- 36. EASEMENT
- 37. EASEMENT
- 38. EASEMENT
- 39. EASEMENT
- 40. EASEMENT
- 41. EASEMENT
- 42. EASEMENT
- 43. EASEMENT
- 44. EASEMENT
- 45. EASEMENT
- 46. EASEMENT
- 47. EASEMENT
- 48. EASEMENT
- 49. EASEMENT
- 50. EASEMENT
- 51. EASEMENT
- 52. EASEMENT
- 53. EASEMENT
- 54. EASEMENT
- 55. EASEMENT
- 56. EASEMENT
- 57. EASEMENT
- 58. EASEMENT
- 59. EASEMENT
- 60. EASEMENT
- 61. EASEMENT
- 62. EASEMENT
- 63. EASEMENT
- 64. EASEMENT
- 65. EASEMENT
- 66. EASEMENT
- 67. EASEMENT
- 68. EASEMENT
- 69. EASEMENT
- 70. EASEMENT
- 71. EASEMENT
- 72. EASEMENT
- 73. EASEMENT
- 74. EASEMENT
- 75. EASEMENT
- 76. EASEMENT
- 77. EASEMENT
- 78. EASEMENT
- 79. EASEMENT
- 80. EASEMENT
- 81. EASEMENT
- 82. EASEMENT
- 83. EASEMENT
- 84. EASEMENT
- 85. EASEMENT
- 86. EASEMENT
- 87. EASEMENT
- 88. EASEMENT
- 89. EASEMENT
- 90. EASEMENT
- 91. EASEMENT
- 92. EASEMENT
- 93. EASEMENT
- 94. EASEMENT
- 95. EASEMENT
- 96. EASEMENT
- 97. EASEMENT
- 98. EASEMENT
- 99. EASEMENT
- 100. EASEMENT

NOTES

NOTE: ALL DIMENSIONS ARE IN FEET AND INCHES. DIMENSIONS ARE GIVEN TO THE CENTER OF THE LINE UNLESS OTHERWISE NOTED.



PLAT OF SURVEY
FOR
RIVERBROOK INCORPORATED

BY CURTIS E. KEPLINGER
STATE OF NEW YORK
LAND SURVEYOR



INDEX	
1. 100' x 100' LOTS	10
2. 50' x 100' LOTS	20
3. 25' x 100' LOTS	30
4. 12.5' x 100' LOTS	40
5. 6.25' x 100' LOTS	50
6. 3.125' x 100' LOTS	60
7. 1.5625' x 100' LOTS	70
8. 0.78125' x 100' LOTS	80
9. 0.390625' x 100' LOTS	90
10. 0.1953125' x 100' LOTS	100

State of New York
In Frederick County, a completed survey of the
The Homestead Subdivision, was submitted to me, and with the
certificates of acknowledgment thereon, was submitted to me.
Tested:
[Signature]
Surveyor