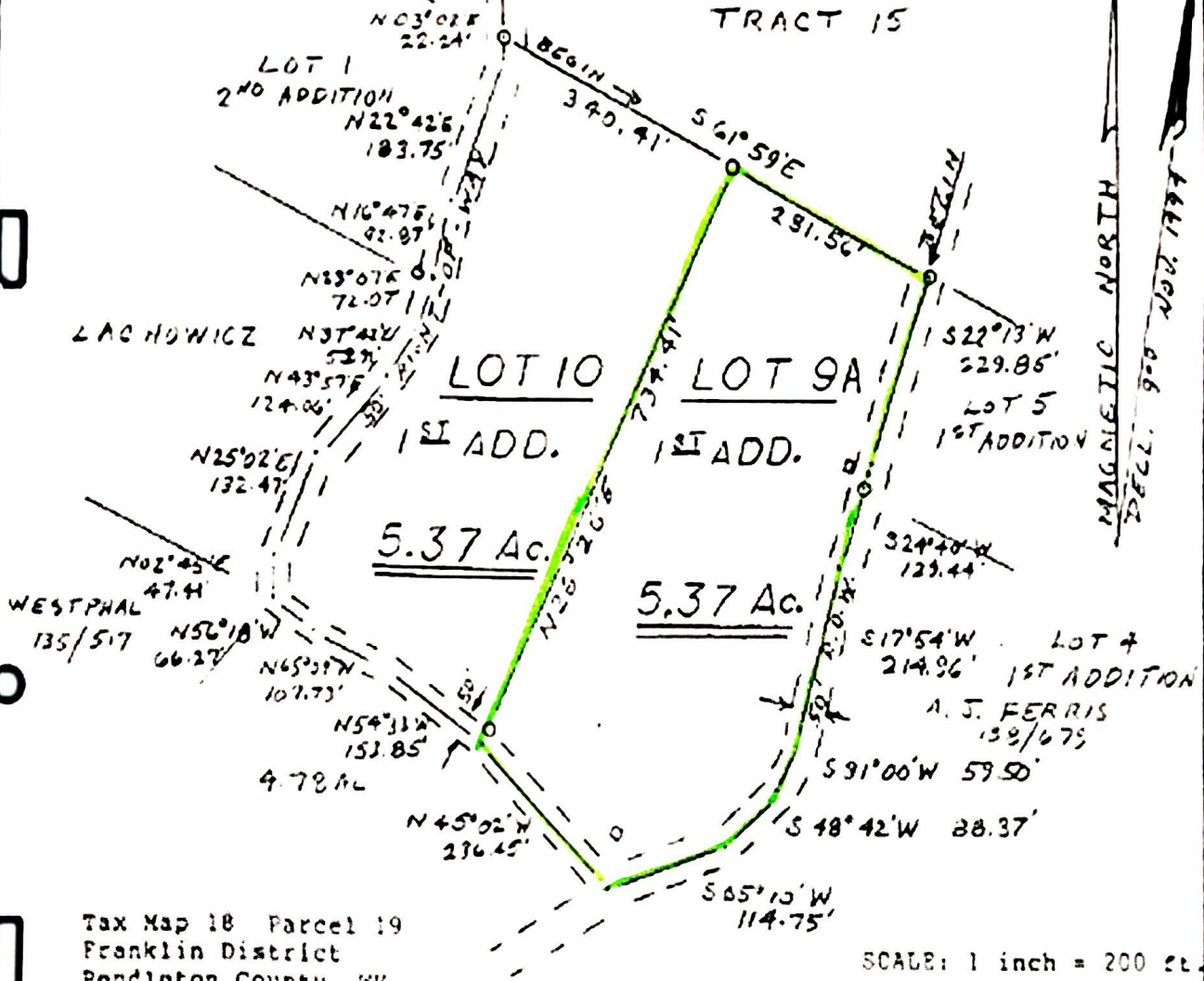


TRACT 16

TRACT 15



Tax Map 18 Parcel 19
Franklin District
Pendleton County, WV,

SCALE: 1 inch = 200 ft.

KEY

- - 1/2" or 5/8" rebar, set
- - point in center of road

PLAT OF SURVEY
for
BUCK RIDGES, INC.
1st ADDITION LOTS #9, #10

Being part of a 212.525 acre tract, Tracts 15 and 16, conveyed by Ervin Michael, et al., to Buck Ridges, Inc., by deed dated July 8, 1993, and recorded in the office of the Clerk of Pendleton County, WV, in Deed Book 134 Page 667.

July 1995

by

Thomas W. Firor
Professional Surveyor

Thomas W. Firor



August 14, 1995