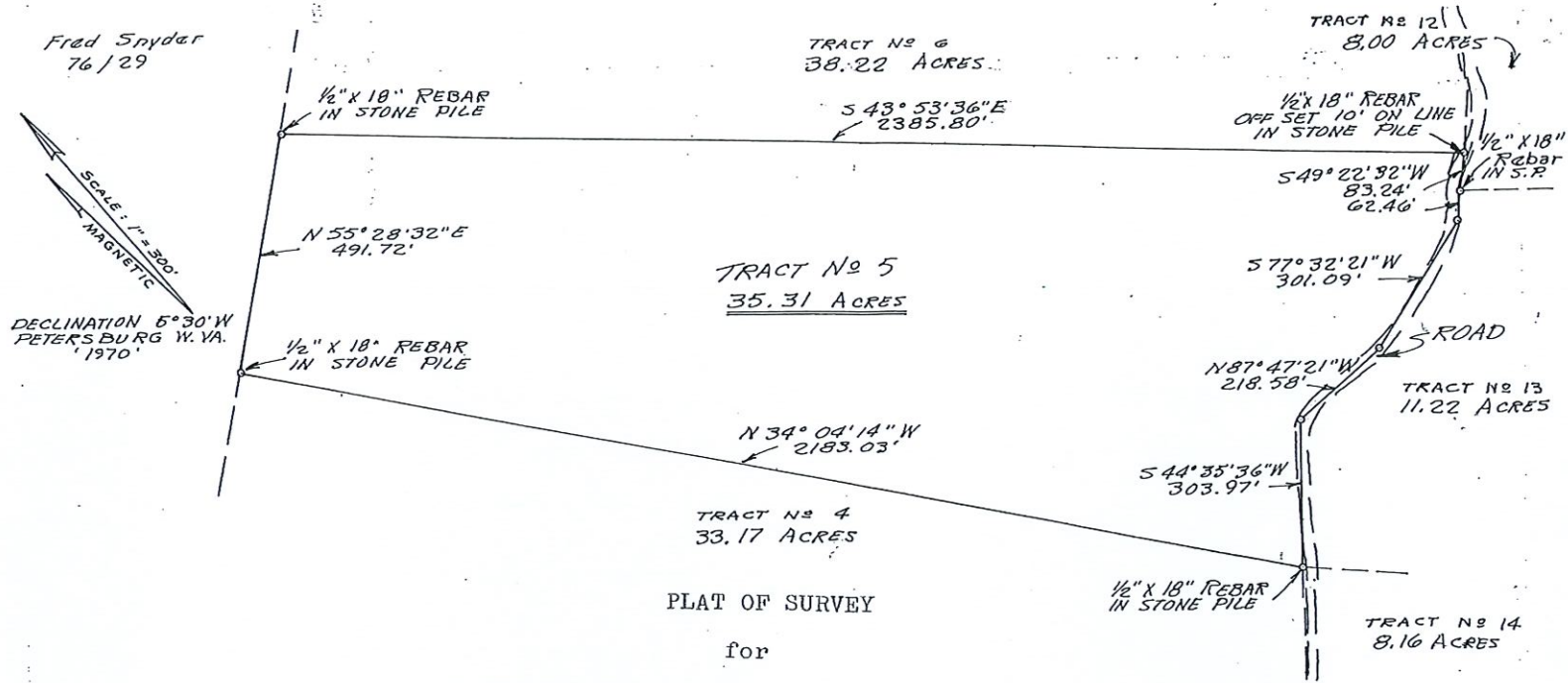


Map Book 1, Page 241  
 "reduced AS TO SCALE"



Fred Snyder  
76/29

SCALE: 1" = 300'  
MAGNETIC

DECLINATION 5° 30' W  
PETERSBURG W. VA.  
'1970'

PLAT OF SURVEY  
for

LANDIMER INC. MONTERRE INC. & HINTERLAND INC.

Being a part of the same land conveyed by Virgil Warner to Landimer Inc.,  
 Monterre Inc. and Hinterland Inc. by deed dated January 8, 1973 and recorded  
 in the office of the Clerk of Pendleton County, West Virginia in Deed Book 92  
 at Page 273.

FRANKLIN DISTRICT

PENDLETON COUNTY, WEST VIRGINIA

35.31 Acres

Scale: 1 in. = 300 ft.  
 Surveyed: February 1973  
 By: Leon J. Wilson  
 L.L.S. 296  
 Petersburg, W. Va.

Signed: Leon J. Wilson  
 Leon J. Wilson  
 L.L.S. 296

Map, p 241

State of West Virginia,

In Pendleton County Court Clerk's Office, July 25, 1973.

The foregoing Plat was this day presented in said office along with a Deed, and was admitted to record. The Deed being of record in Deed Book No. 93 at Page 141.

Teste:

Leon J. Wilson, Clerk.