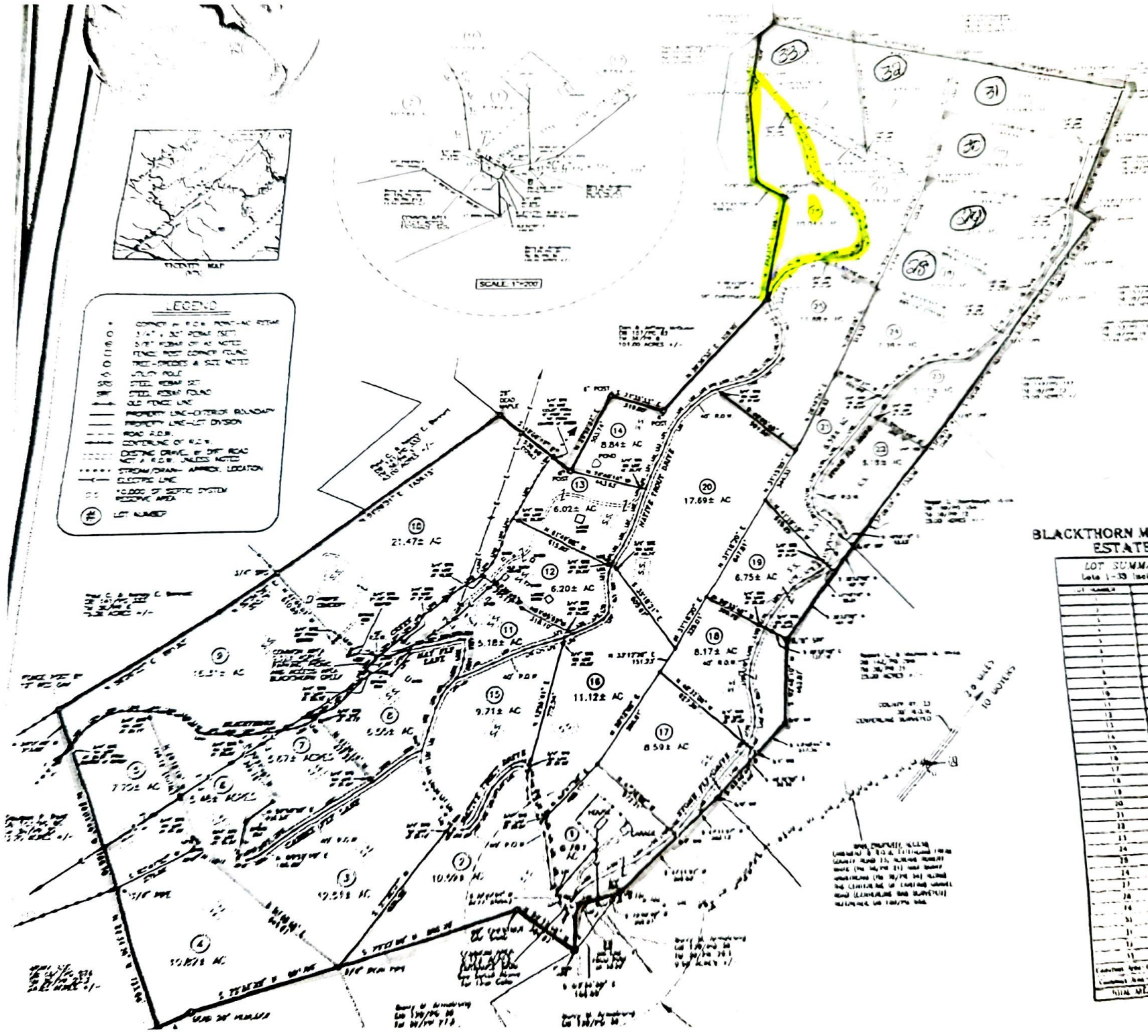


- LEGEND**
- BOUNDARY
 - PROPERTY LINE - OTHER BOUNDARY
 - PROPERTY LINE - OF DISSON
 - ROAD
 - CENTERLINE OF ROAD
 - DISTINGUISHING LINE OF ROAD
 - STREAM/DRAIN - APPROX. LOCATION
 - ELECTRIC LINE
 - 10,000 G.P. SERVICE SYSTEM
 - RECORDING AREA
 - ① - 33 LOTS



BLACKTHORN M. ESTATE

LOT SUMMA
Lots 1-33 Inclusive

Lot No.	Acres
1	6.75
2	17.69
3	12.55
4	5.07
5	7.72
6	5.52
7	10.59
8	9.71
9	12.55
10	5.18
11	6.20
12	6.20
13	11.12
14	8.59
15	6.75
16	8.17
17	8.59
18	8.17
19	6.75
20	17.69
21	11.12
22	11.12
23	6.02
24	8.59
25	8.59
26	8.59
27	8.59
28	8.59
29	8.59
30	8.59
31	8.59
32	8.59
33	8.59
TOTAL	232.15

NOTE: CHAINING AND SURVEYING BY JAMES H. HARRIS, CIVIL ENGINEER, IN 1887. THE ORIGINAL PLAT IS FILED IN THE OFFICE OF THE COUNTY CLERK, CLATSOP COUNTY, OREGON. THE ORIGINAL PLAT IS FILED IN THE OFFICE OF THE COUNTY CLERK, CLATSOP COUNTY, OREGON.

Survey of Acreage
Jan 1907/98 30
To 10/19/19 713

Survey of Acreage
Jan 1907/98 30
To 10/19/19 713